

Clathrin, Light Chain Antibody

Mouse Monoclonal Antibody [Clone SPM174]

Catalog No	Format	Size
1211-MSM1X-P0	Purified Ab with BSA and Azide at 200ug/ml	20 ug
1211-MSM1X-P1	Purified Ab with BSA and Azide at 200ug/ml	100 ug
1211-MSM1X-P1ABX	Purified Ab WITHOUT BSA and Azide at 1.0mg/ml	100 ug

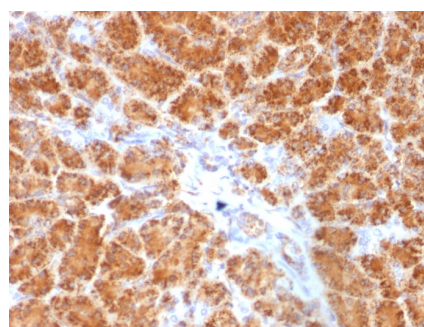
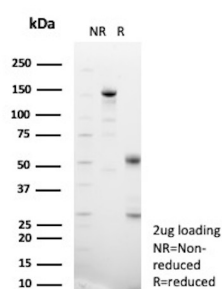
Applications	Tested Dillution	Note
Flow Cytometry (Flow)	1-2ug/million cells	
Immunofluorescence (IF)	1-3ug/ml	
Immunohistochemistry (IHC)	1-2ug/ml	30 min at RT. Staining of formalin-fixed tissues requires heating tissue sections in 10mM Tris with 1mM EDTA, pH 9.0, for 45 min at 95°C followed by cooling at RT for 20 minutes
Western Blot (WB)	2-4ug/ml	

Product Details

Clone	SPM174
Gene Name	CLTA
Immunogen	Purified recombinant N-terminal fragment of human Clathrin Light Chain
Host	Mouse
Clonality	Monoclonal
Isotype / Light Chain	IgG2b / Kappa
Mol. Weight of Antigen	31-44kDa
Cellular Localization	Coated pit, Cytoplasm, Cytoplasmic vesicle membrane, Cytoskeleton, Membrane, Spindle
Species Reactivity	Human
Positive Control	HeLa cells. Placenta or Prostate Carcinoma.

*Optimal dilution for a specific application should be determined.

Product Images for Clathrin, Light Chain Antibody



SDS-PAGE Analysis of Purified Clathrin, Light Chain Monoclonal Antibody (SPM174). Confirmation of Purity and Integrity of Antibody.

Formalin-fixed, paraffin-embedded human Pancreas stained with Clathrin, LC Monoclonal Antibody (SPM174).

Specificity & Comments

Recognizes proteins of 31-44kDa, which are identified as Clathrin Light Chains (both A B). Clathrin is composed of three heavy chains and three light chains, which associate non-covalently to form a triskelion structure. Clathrin light chain regulates the self-assembly of triskelions onto intracellular membranes. Clathrin light chain subunits (LCA and LCB) contribute to regulation of coated vesicle formation to sort proteins during receptor-mediated endocytosis and organelle biogenesis. LCA and LCB are encoded by two discrete genes. They share only 60% homology, and have certain features in common. Both LCA and LCB undergo alternative mRNA splicing, which results in the generation of tissue-specific isoforms.

Limitations and Warranty

This antibody is available for research use only and is not approved for use in diagnosis. There are no warranties, expressed or implied, which extend beyond this description. Company is not liable for any personal injury or economic loss resulting from this product.

Supplied As

200ug/ml of Ab Purified from Bioreactor Concentrate by Protein A/G. Prepared in 10mM PBS with 0.05% BSA & 0.05% azide. Also available WITHOUT BSA & azide at 1.0mg/ml.

Storage and Stability

Antibody with azide - store at 2 to 8°C. Antibody without azide - store at -20 to -80°C. Antibody is stable for 24 months. Non-hazardous. No MSDS required.

Research Areas

Immunology, Infectious Disease, Signal Transduction
