

ECD/ SGT1 Antibody

Mouse Monoclonal Antibody [Clone PCR-P-ECD-1D10]

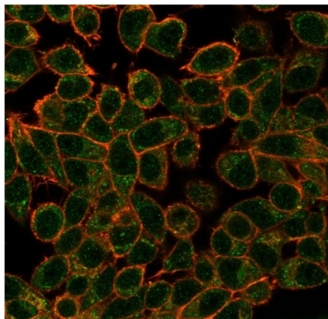
Catalog No	Format	Size
11319-MSM1-P0	Purified Ab with BSA and Azide at 200ug/ml	20 ug
11319-MSM1-P1	Purified Ab with BSA and Azide at 200ug/ml	100 ug
11319-MSM1-P1ABX	Purified Ab WITHOUT BSA and Azide at 1.0mg/ml	100 ug

Applications	Tested Dillution	Note
Flow Cytometry (Flow)	1-2ug/million cells	
Immunofluorescence (IF)	1-3ug/ml	

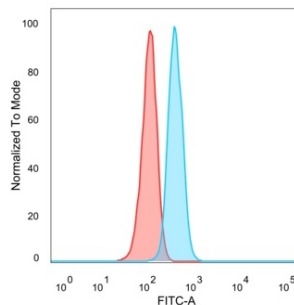
Product Details	
Clone	PCR-P-ECD-1D10
Gene Name	ECD
Immunogen	Recombinant full-length human ECD protein
Host	Mouse
Clonality	Monoclonal
Isotype / Light Chain	IgG2b
Mol. Weight of Antigen	72.76kDa
Cellular Localization	Cytoplasm, Nucleus
Species Reactivity	Human
Positive Control	HeLa or 293T cells.Human testis, spleen or colon.

*Optimal dilution for a specific application should be determined.

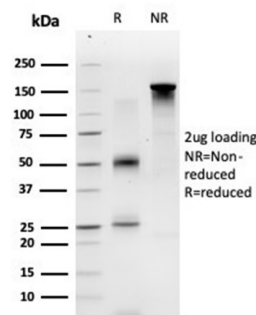
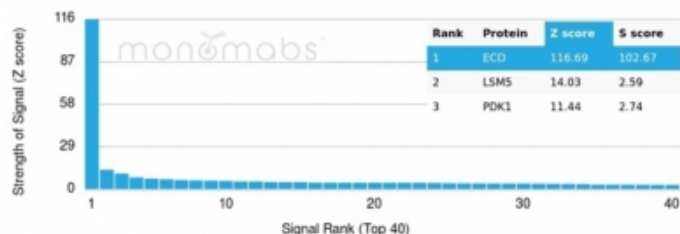
Product Images for ECD/ SGT1 Antibody



Immunofluorescence analysis of PFA-fixed HeLa cells. ECD Mouse Monoclonal Antibody (PCR-P-ECD-1D10) followed by goat anti-mouse IgG-CF488 (green).



Flow cytometric analysis of PFA-fixed HeLa cells. ECD Mouse Monoclonal Antibody (PCR-P-ECD-1D10) followed by goat anti-mouse IgG-CF488 (blue), unstained cells (red).



Analysis of Protein Array containing more than 19,000 full-length human proteins using ECD Mouse Monoclonal Antibody (PCRP-ECD-1D10). Z- and S- Score: The Z-score represents the strength of a signal that a monoclonal antibody (MAb) (in combination with a fluorescently-tagged anti-IgG secondary antibody) produces when binding to a particular protein on the HuProt™ array. Z-scores are described in units of standard deviations (SD's) above the mean value of all signals generated on that array. If targets on HuProt™ are arranged in descending order of the Z-score, the S-score is the difference (also in units of SD's) between the Z-score. S-score therefore represents the relative target specificity of a MAb to its intended target. A MAb is considered to be specific to its intended target, if the MAb has an S-score of at least 2.5. For example, if a MAb binds to protein X with a Z-score of 43 and to protein Y with a Z-score of 14, then the S-score for the binding of that MAb to protein X is equal to 29.

SDS-PAGE Analysis of Purified ECD Mouse Monoclonal Antibody (PCRP-ECD-1D10). Confirmation of Purity and Integrity of Antibody.

Specificity & Comments

Inhibits MDM2-mediated degradation of p53/TP53 possibly by cooperating in part with TXNIP. May be involved transcriptional regulation. In vitro has intrinsic transactivation activity enhanced by EP300. May be a transcriptional activator required for the expression of glycolytic genes. Involved in regulation of cell cycle progression. Proposed to disrupt Rb-E2F binding leading to transcriptional activation of E2F proteins. The cell cycle -regulating function may depend on its RUVBL1-mediated association with the R2TP complex. May play a role in regulation of pre-mRNA splicing.

Supplied As

200ug/ml of Ab purified from Bioreactor Concentrate by Protein A/G. Prepared in 10mM PBS with 0.05% BSA & 0.05% azide. Also available WITHOUT BSA & azide at 1.0mg/ml.

Storage and Stability

Antibody with azide - store at 2 to 8 °C. Antibody without azide - store at -20 to -80 °C. Antibody is stable for 24 months. Non-hazardous. No MSDS required.

Research Areas

Nuclear Marker

Limitations and Warranty

This antibody is available for research use only and is not approved for use in diagnosis. There are no warranties, expressed or implied, which extend beyond this description. Company is not liable for any personal injury or economic loss resulting from this product.