

Recombinant Chromogranin A / CHGA (Neuroendocrine Marker) Antibody

Rabbit Monoclonal Antibody [Clone CHGA/4544R]

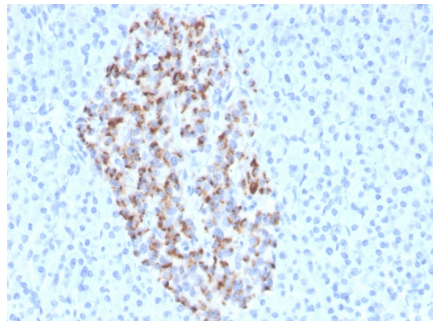
Catalog No	Format	Size
1113-RBM24-P0	Purified Ab with BSA and Azide	200ug/ml
1113-RBM24-P1	Purified Ab with BSA and Azide	200ug/ml
1113-RBM24-P1ABX	Purified Ab WITHOUT BSA and Azide	1.0mg/ml

Applications	Tested Dillution
Immunohistochemistry (IHC)	1-2ug/ml

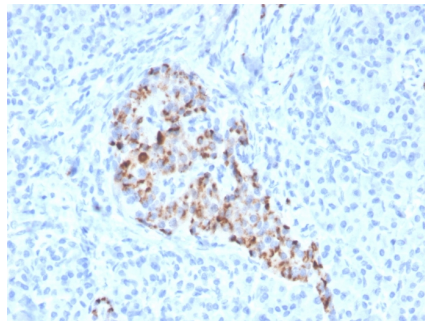
Product Details	
Clone	CHGA/4544R
Gene Name	CHGA
Immunogen	Synthetic peptide corresponding to residues within aa400 to aa600 of Chromogranin A was used as an immunogen
Host	Rabbit
Clonality	Monoclonal
Isotype / Light Chain	IgG / Kappa
Mol. Weight of Antigen	51kDa
Cellular Localization	Cytoplasmic vesicle, Neuronal dense core vesicle, Secreted, Secretory vesicle
Species Reactivity	Human
Positive Control	bowel, or pheochromocytoma., Pancreas, PC12 cells. Adrenal gland, Thyroid

**Optimal dilution for a specific application should be determined.*

Product Images for Recombinant Chromogranin A / CHGA (Neuroendocrine Marker) Antibody



IHC analysis of formalin-fixed, paraffin-embedded human brain. Negative tissue control using CHGA/4544R at 2ug/ml in PBS for 30min RT. HIER: Tris/EDTA, pH9.0, 45min. 2°C: HRP-polymer, 30min. DAB, 5min.



Formalin-fixed, paraffin-embedded human pancreas stained with Chromogranin A Recombinant Rabbit Monoclonal Antibody (CHGA/4544R). HIER: Tris/EDTA, pH9.0, 45min. 2°C: HRP-polymer, 30min. DAB, 5min.

Specificity & Comments

Chromogranin A (CGA) is an acidic protein which is reported to be widely expressed in neural tissues and in secretory granules of human endocrine cells e.g. parathyroid gland, adrenal medulla, anterior pituitary gland, islet cells of the pancreas and C cells of the thyroid. GA is found in the large majority of epithelial NE tumors: pituitary adenomas, parathyroid and pancreatic islet cell tumors, medullary thyroid carcinoma, and carcinoid tumors. Together with synaptophysin, CGA is the most important marker for the identification of NE and neuronal tumors and NE/neuronal differentiation in other tumors.

Research Areas

Cardiovascular, Immunology

Known Applications & Suggested Dilutions

Immunohistochemistry (Formalin-fixed) (1-2ug/ml for 30 minutes at RT),(Staining of formalin-fixed tissues requires heating tissue sections in 10mM Tris with 1mM EDTA, pH 9.0, for 45 min at 95 °C followed by cooling at RT for 20 minutes),Optimal dilution for a specific application should be determined.

Limitations and Warranty

This antibody is available for research use only and is not approved for use in diagnosis.

There are no warranties, expressed or implied, which extend beyond this description. Company is not liable for any personal injury or economic loss resulting from this product.

Supplied As

200ug/ml of Ab purified from Bioreactor Concentrate by Protein A/G. Prepared in 10mM PBS with 0.05% BSA & 0.05% azide. Also available WITHOUT BSA & azide at 1.0mg/ml.

Storage and Stability

Antibody with azide - store at 2 to 8 °C. Antibody without azide - store at -20 to -80 °C. Antibody is stable for 24 months. Non-hazardous. No MSDS required.
