

Chromogranin A / CHGA (Neuroendocrine Marker) Antibody

Mouse Monoclonal Antibody [Clone CGA/413]

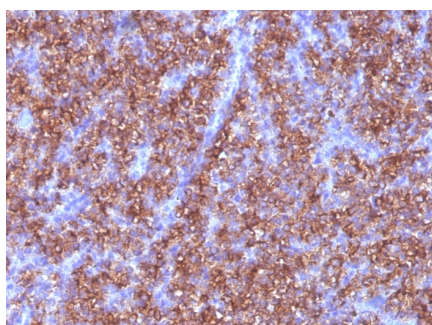
Catalog No	Format	Size
1113-MSM9-P0	Purified Ab with BSA and Azide	200ug/ml
1113-MSM9-P1	Purified Ab with BSA and Azide	200ug/ml
1113-MSM9-P1ABX	Purified Ab WITHOUT BSA and Azide	1.0mg/ml

Applications	Tested Dillution
Immunohistochemistry (IHC)	1-2ug/ml

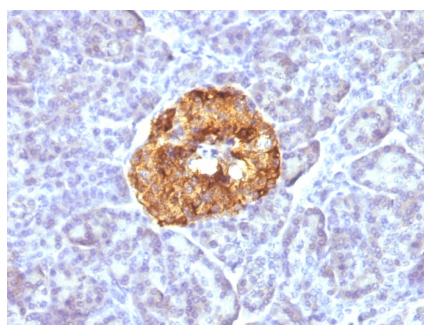
Product Details	
Clone	CGA/413
Gene Name	CHGA
Immunogen	Recombinant full-length human chromogranin A protein
Host	Mouse
Clonality	Monoclonal
Isotype / Light Chain	IgG2b / Kappa
Mol. Weight of Antigen	68-75kDa
Cellular Localization	Cytoplasmic vesicle, Neuronal dense core vesicle, Secreted, Secretory vesicle
Species Reactivity	Human
Positive Control	Adrenal gland, thyroid, bowel, pancreas or pheochromocytoma. PC12 cells.

**Optimal dilution for a specific application should be determined.*

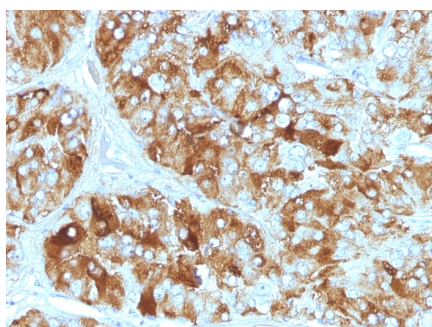
Product Images for Chromogranin A / CHGA (Neuroendocrine Marker) Antibody



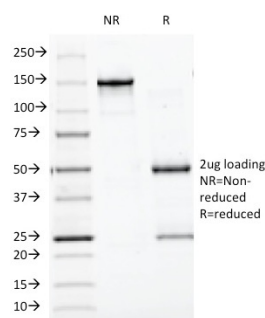
Formalin-fixed, paraffin-embedded human Parathyroid stained with Chromogranin A Monoclonal Antibody (CGA/413)



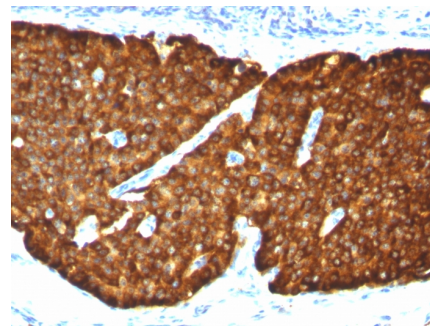
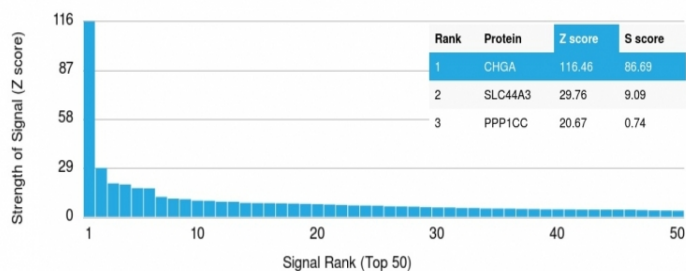
Formalin-fixed, paraffin-embedded human Pancreas stained with Chromogranin A Monoclonal Antibody (CGA/413)



Formalin-fixed, paraffin-embedded human Adrenal Gland stained with Chromogranin A Monoclonal Antibody (CGA/413)



SDS-PAGE Analysis Purified Chromogranin A Monoclonal Antibody (CGA/413). Confirmation of Integrity and Purity of Antibody.



Formalin-fixed, paraffin-embedded human Pheochromocytoma stained with Chromogranin A Monoclonal Antibody (CGA/413)

Analysis of Protein Array containing more than 19,000 full-length human proteins using Chromogranin A (CHGA) Mouse Monoclonal Antibody (CHGA/413) Z- and S- Score: The Z-score represents the strength of a signal that a monoclonal antibody (MAb) (in combination with a fluorescently-tagged anti-IgG secondary antibody) produces when binding to a particular protein on the HuProt™ array. Z-scores are described in units of standard deviations (SD's) above the mean value of all signals generated on that array. If targets on HuProt™ are arranged in descending order of the Z-score, the S-score is the difference (also in units of SD's) between the Z-score. S-score therefore represents the relative target specificity of a MAb to its intended target. A MAb is considered to be specific to its intended target, if the MAb has an S-score of at least 2.5. For example, if a MAb binds to protein X with a Z-score of 43 and to protein Y with a Z-score of 14, then the S-score for the binding of that MAb to protein X is equal to 29.

Specificity & Comments

Chromogranin A is present in neuroendocrine cells throughout the body, including the neuroendocrine cells of the large and small intestine, adrenal medulla and pancreatic islets. It is an excellent marker for carcinoid tumors, pheochromocytomas, paragangliomas, and other neuroendocrine tumors. Co-expression of chromogranin A and neuron specific enolase (NSE) is common in neuroendocrine neoplasms. Reportedly, co-expression of certain keratins and chromogranin indicates neuroendocrine lineage. The presence of strong anti-chromogranin staining and absence of anti-keratin staining should raise the possibility of paraganglioma. The co-expression of chromogranin and NSE is typical of neuroendocrine neoplasms. Most pituitary adenomas and prolactinomas readily express chromogranin.

Research Areas

Cardiovascular, Immunology

Known Applications & Suggested Dilutions

Immunohistochemistry (Formalin-fixed) (0.25-0.5ug/ml for 30 minutes at RT) (Staining of formalin-fixed tissues requires heating tissue sections in 10mM Tris with 1mM EDTA, pH 9.0, for 45 min at 95°C followed by cooling at RT for 20 minutes) | Optimal dilution for a specific application should be determined.

Limitations and Warranty

This antibody is available for research use only and is not approved for use in diagnosis.

There are no warranties, expressed or implied, which extend beyond this description. Company is not liable for any personal injury or economic loss resulting from this product.

Supplied As

200ug/ml of Ab Purified from Bioreactor Concentrate by Protein A/G. Prepared in 10mM PBS with 0.05% BSA & 0.05% azide. Also available WITHOUT BSA & azide at 1.0mg/ml.

Storage and Stability

Antibody with azide - store at 2 to 8°C. Antibody without azide - store at -20 to -80°C. Antibody is stable for 24 months. Non-hazardous. No MSDS required.