

## Chromogranin A / CHGA (Neuroendocrine Marker) Antibody

Mouse Monoclonal Antibody [Clone CHGA/798]

Catalog No	Format	Size
1113-MSM8-P0	Purified Ab with BSA and Azide at 200ug/ml	20 ug
1113-MSM8-P1	Purified Ab with BSA and Azide at 200ug/ml	100 ug
1113-MSM8-P1ABX	Purified Ab WITHOUT BSA and Azide at 1.0mg/ml	100 ug

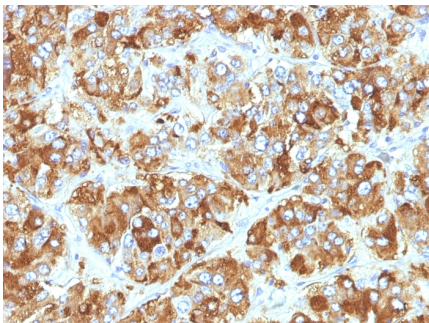
Applications	Tested Dillution	Note
Flow Cytometry (Flow)	1-2ug/million cells	
Immunofluorescence (IF)	1-3ug/ml	
Immunohistochemistry (IHC)	1-2ug/ml	30 min at RT. Staining of formalin-fixed tissues requires heating tissue sections in 10mM Tris with 1mM EDTA, pH 9.0, for 45 min at 95°C followed by cooling at RT for 20 minutes

### Product Details

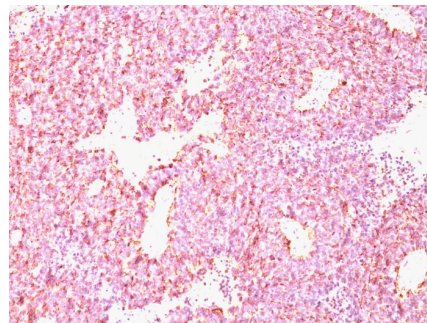
<b>Clone</b>	CHGA/798
<b>Gene Name</b>	CHGA
<b>Immunogen</b>	Recombinant full-length human CHGA protein
<b>Host</b>	Mouse
<b>Clonality</b>	Monoclonal
<b>Isotype / Light Chain</b>	IgG1 / Kappa
<b>Mol. Weight of Antigen</b>	68-75kDa
<b>Cellular Localization</b>	Cytoplasmic vesicle, Neuronal dense core vesicle, Secreted, Secretory vesicle
<b>Species Reactivity</b>	Human, Mouse, Rat
<b>Positive Control</b>	bowel, pancreas or pheochromocytoma., PC12 cells. Adrenal gland, Thyroid

\*Optimal dilution for a specific application should be determined.

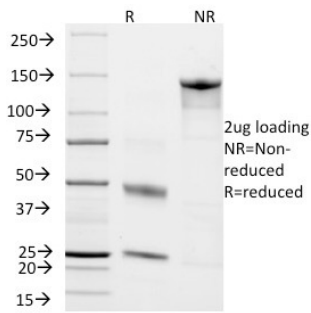
### Product Images for Chromogranin A / CHGA (Neuroendocrine Marker) Antibody



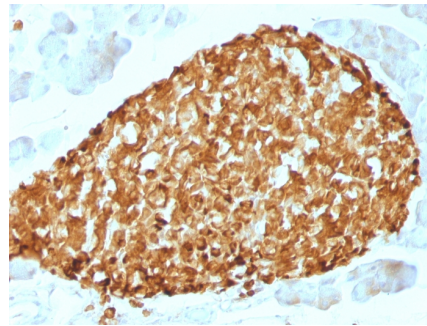
Formalin-fixed, paraffin-embedded human Adrenal Gland stained with Chromogranin A Monoclonal Antibody (CHGA/798)



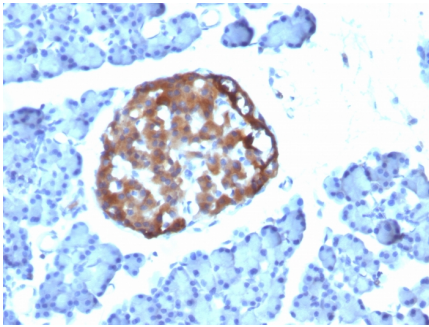
Formalin-fixed, paraffin-embedded human SC Lung Carcinoma stained with Chromogranin A Monoclonal Antibody (CHGA/798)



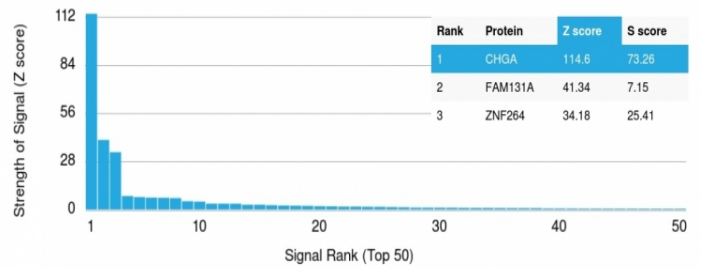
SDS-PAGE Analysis Purified Chromogranin A Monoclonal Antibody (CHGA/798). Confirmation of Integrity and Purity of Antibody.



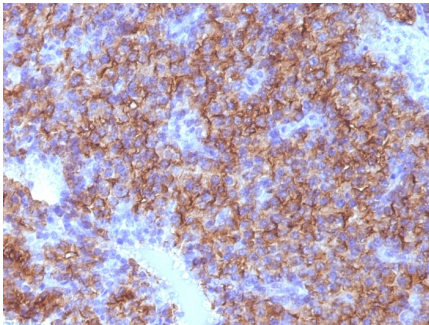
Formalin-fixed, paraffin-embedded Mouse Pancreas stained with Chromogranin A Mouse Monoclonal Antibody (CHGA/798)



Formalin-fixed, paraffin-embedded Rat Pancreas stained with Chromogranin A Mouse Monoclonal Antibody (CHGA/798)



Analysis of Protein Array containing more than 19,000 full-length human proteins using Chromogranin A (CHGA) Mouse Monoclonal Antibody (CHGA/798) Z- and S- Score: The Z-score represents the strength of a signal that a monoclonal antibody (MAb) (in combination with a fluorescently-tagged anti-IgG secondary antibody) produces when binding to a particular protein on the HuProt™ array. Z-scores are described in units of standard deviations (SD's) above the mean value of all signals generated on that array. If targets on HuProt™ are arranged in descending order of the Z-score, the S-score is the difference (also in units of SD's) between the Z-score. S-score therefore represents the relative target specificity of a MAb to its intended target. A MAb is considered to specific to its intended target, if the MAb has an S-score of at least 2.5. For example, if a MAb binds to protein X with a Z-score of 43 and to protein Y with a Z-score of 14, then the S-score for the binding of that MAb to protein X is equal to 29.



Formalin-fixed, paraffin-embedded human Parathyroid stained with Chromogranin A Monoclonal Antibody (CHGA/798)

### **Specificity & Comments**

Chromogranin A is present in neuroendocrine cells throughout the body, including the neuroendocrine cells of the large and small intestine, adrenal medulla and pancreatic islets. It is an excellent marker for carcinoid tumors, pheochromocytomas, paragangliomas, and other neuroendocrine tumors. Co-expression of chromogranin A and neuron specific enolase (NSE) is common in neuroendocrine neoplasms. Reportedly, co-expression of certain keratins and chromogranin indicates neuroendocrine lineage. The presence of strong anti-chromogranin staining and absence of anti-keratin staining should raise the possibility of paraganglioma. The co-expression of chromogranin and NSE is typical of neuroendocrine neoplasms. Most pituitary adenomas and prolactinomas readily express chromogranin.

---

### **Limitations and Warranty**

This antibody is available for research use only and is not approved for use in diagnosis. There are no warranties, expressed or implied, which extend beyond this description. Company is not liable for any personal injury or economic loss resulting from this product.

---

### **Supplied As**

200ug/ml of Ab Purified from Bioreactor Concentrate by Protein A/G. Prepared in 10mM PBS with 0.05% BSA & 0.05% azide. Also available WITHOUT BSA & azide at 1.0mg/ml.

---

### **Storage and Stability**

Antibody with azide - store at 2 to 8°C. Antibody without azide - store at -20 to -80°C. Antibody is stable for 24 months. Non-hazardous. No MSDS required.

---

### **Research Areas**

Cardiovascular, Immunology

---