

Recombinant MALT1 (MALT-Lymphoma Marker) Antibody

Rabbit Monoclonal Antibody [Clone MT1/3159R]

Catalog No	Format	Size
10892-RBM2-P0	Purified Ab with BSA and Azide at 200ug/ml	20 ug
10892-RBM2-P1	Purified Ab with BSA and Azide at 200ug/ml	100 ug
10892-RBM2-P1ABX	Purified Ab WITHOUT BSA and Azide at 1.0mg/ml	100 ug

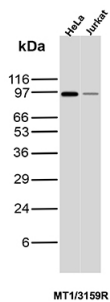
Applications	Tested Dillution	Note
Immunohistochemistry (IHC)	1-2ug/ml	30 min at RT. Staining of formalin-fixed tissues requires heating tissue sections in 10mM Tris with 1mM EDTA, pH 9.0, for 45 min at 95°C followed by cooling at RT for 20 minutes
Western Blot (WB)	2-4ug/ml	

Product Details

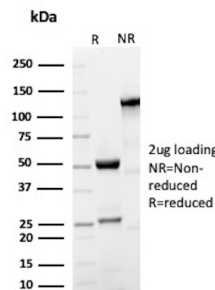
Clone	MT1/3159R
Gene Name	MALT1
Immunogen	Human MALT1 recombinant fragment (aa701-808)
Host	Rabbit
Clonality	Monoclonal
Isotype / Light Chain	IgG / Kappa
Mol. Weight of Antigen	93kDa
Cellular Localization	Cytoplasm, Nucleus, Perinuclear region
Species Reactivity	Human
Positive Control	Daudi or HeLa cells. Tonsil or lymphoma., Jurkat

*Optimal dilution for a specific application should be determined.

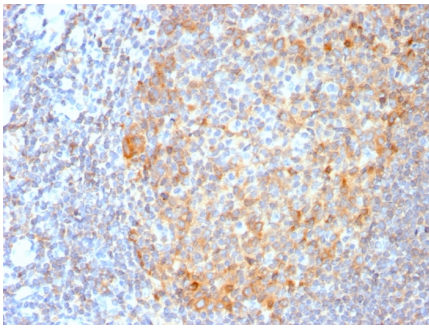
Product Images for Recombinant MALT1 (MALT-Lymphoma Marker) Antibody



Western blot analysis of HeLa and Jurkat cell lysates using MALT-1 Recombinant Rabbit Monoclonal Antibody (MT1/3159R).



SDS-PAGE Analysis of Purified Mucosa-associated lymphoid tissue lymphoma translocation protein 1 Rabbit Monoclonal Antibody (MT1/3159R). Confirmation of Purity and Integrity of Antibody.



Formalin-fixed, paraffin-embedded human Tonsil stained with MALT1 Recombinant Rabbit Monoclonal Antibody (MT1/3159R).

Specificity & Comments

Mucosa associated lymphoid tissue lymphoma translocation gene 1 (MALT1) is found in extranodal low-grade B cell lymphomas. MALT1 encodes two Ig-like C2-type domains and fuses with an API2 gene, which is highly expressed in adult lymphoid tissue. The translocation of this MALT1 gene, which maps to human chromosome 18q21, and the apoptosis-inhibiting API2 gene results in an increased development of MALT lymphomas and apoptosis inhibition. Sites at which this API2-MALT1 (11;18)(q21;q21) translocation commonly occurs are within human lung and kidney tissue. MALT lymphoma expresses nuclear Bcl10, which mediates the oligomerization and activation of a MALT1 caspase-like domain. MALT1 mRNA is found in pre-B cells, mature B cells and plasma cells.

Limitations and Warranty

This antibody is available for research use only and is not approved for use in diagnosis. There are no warranties, expressed or implied, which extend beyond this description. Company is not liable for any personal injury or economic loss resulting from this product.

Supplied As

200ug/ml of Ab Purified from Bioreactor Concentrate by Protein A/G. Prepared in 10mM PBS with 0.05% BSA & 0.05% azide. Also available WITHOUT BSA & azide at 1.0mg/ml.

Storage and Stability

Antibody with azide - store at 2 to 8°C. Antibody without azide - store at -20 to -80°C. Antibody is stable for 24 months. Non-hazardous. No MSDS required.

Research Areas

Apoptosis, Autophagy, Cardiovascular, Immunology