

## Recombinant HCG-alpha (Pregnancy & Choriocarcinoma Marker) Antibody

Rabbit Monoclonal Antibody [Clone HCGa/2728R]

Catalog No	Format	Size
1081-RBM4-P0	Purified Ab with BSA and Azide at 200ug/ml	20 ug
1081-RBM4-P1	Purified Ab with BSA and Azide at 200ug/ml	100 ug
1081-RBM4-P1ABX	Purified Ab WITHOUT BSA and Azide at 1.0mg/ml	100 ug

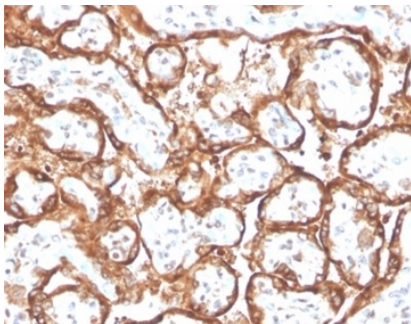
Applications	Tested Dillution	Note
Immunohistochemistry (IHC)	1-2ug/ml	30 min at RT. Staining of formalin-fixed tissues requires heating tissue sections in 10mM Tris with 1mM EDTA, pH 9.0, for 45 min at 95°C followed by cooling at RT for 20 minutes

### Product Details

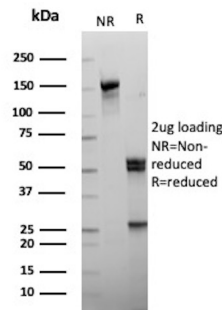
<b>Clone</b>	HCGa/2728R
<b>Gene Name</b>	CGA
<b>Immunogen</b>	Recombinant fragment (around aa1-100) of human hCG alpha protein (exact sequence is proprietary)
<b>Host</b>	Rabbit
<b>Clonality</b>	Monoclonal
<b>Isotype / Light Chain</b>	IgG / Kappa
<b>Mol. Weight of Antigen</b>	~13kDa
<b>Cellular Localization</b>	Secreted
<b>Species Reactivity</b>	Human
<b>Positive Control</b>	Human placenta.

\*Optimal dilution for a specific application should be determined.

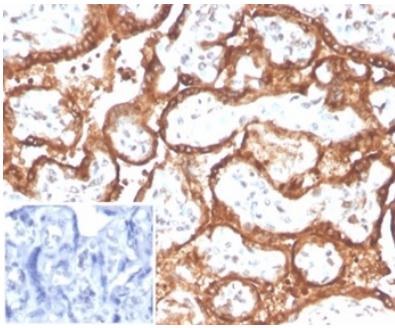
### Product Images for Recombinant HCG-alpha (Pregnancy & Choriocarcinoma Marker) Antibody



Formalin-fixed, paraffin-embedded human placenta stained with HCG-alpha Rabbit Recombinant Monoclonal Antibody (HCGa/2728R). HIER: Tris/EDTA, pH9.0, 45min. 2°C: HRP-polymer, 30min. DAB, 5min.



SDS-PAGE Analysis of Purified LH-alpha Recombinant Rabbit Monoclonal Antibody(HCGa/2728R). Confirmation of Purity and Integrity of Antibody.



Formalin-fixed, paraffin-embedded human placenta stained with HCG-alpha Rabbit Recombinant Monoclonal Antibody (HCGa/2728R). Inset: PBS instead of primary antibody; secondary only negative control.

---

### Specificity & Comments

Human chorionic gonadotropin antibody (hCG) is a glycoprotein hormone synthesized in syncytiotrophoblastic cells of placenta and in certain trophoblastic tumors. The hormone-specific alpha chains have molecular weights of 13 kDa. HCG is found in moles and choriocarcinoma, chorionic components of germ cell tumors, and syncytiotrophoblast like cells in seminoma/dysgerminoma and embryonal carcinoma. In diagnostic pathology, hCG is a useful marker for classification of germ cell tumors, identification of extragonadal germ cell tumors.

---

### Limitations and Warranty

This antibody is available for research use only and is not approved for use in diagnosis. There are no warranties, expressed or implied, which extend beyond this description. Company is not liable for any personal injury or economic loss resulting from this product.

---

### Supplied As

200ug/ml of Ab purified from Bioreactor Concentrate by Protein A/G. Prepared in 10mM PBS with 0.05% BSA & 0.05% azide. Also available WITHOUT BSA & azide at 1.0mg/ml.

---

### Storage and Stability

Antibody with azide - store at 2 to 8 °C. Antibody without azide - store at -20 to -80 °C. Antibody is stable for 24 months. Non-hazardous. No MSDS required.

---

### Research Areas

Signal Transduction, Transcription Factors

---