

HCG-alpha Antibody

Mouse Monoclonal Antibody [Clone SPM552]

Catalog No	Format	Size
1081-MSM1X-P0	Purified Ab with BSA and Azide at 200ug/ml	20 ug
1081-MSM1X-P1	Purified Ab with BSA and Azide at 200ug/ml	100 ug
1081-MSM1X-P1ABX	Purified Ab WITHOUT BSA and Azide at 1.0mg/ml	100 ug

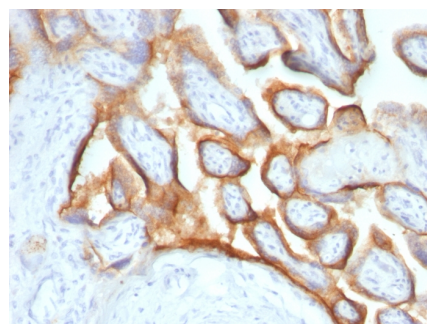
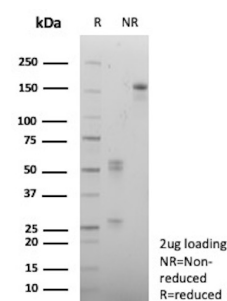
Applications	Tested Dillution	Note
Immunohistochemistry (IHC)	1-2ug/ml	30 min at RT. Staining of formalin-fixed tissues requires heating tissue sections in 10mM Tris with 1mM EDTA, pH 9.0, for 45 min at 95°C followed by cooling at RT for 20 minutes

Product Details

Clone	SPM552
Gene Name	CGA
Immunogen	Recombinant hCG alpha protein
Host	Mouse
Clonality	Monoclonal
Isotype / Light Chain	IgG1 / Kappa
Mol. Weight of Antigen	~13kDa
Cellular Localization	Secreted
Species Reactivity	Human
Positive Control	Placenta.

*Optimal dilution for a specific application should be determined.

Product Images for HCG-alpha Antibody



SDS-PAGE Analysis of Purified hCG-alpha Mouse Monoclonal Antibody (SPM552). Confirmation of Purity and Integrity of Antibody.

Formalin-fixed, paraffin-embedded human Placenta stained with hCG alpha Monoclonal Antibody (SPM552).

Specificity & Comments

This MAb reacts with a protein of ~13kDa, identified as alpha subunit of HCG. HCG is a glycoprotein, which is secreted in large quantities by normal trophoblasts. It is present only in trace amounts in non-pregnant urine and sera but rises sharply during pregnancy. HCG is composed of two non-identical, non-covalently linked polypeptide chains designated as the subunit is identical to that of thyroid stimulating hormone (TSH) follicle stimulating hormone (FSH), and luteinizing hormone (LH).

Supplied As

200ug/ml of Ab Purified from Bioreactor Concentrate by Protein A/G. Prepared in 10mM PBS with 0.05% BSA & 0.05% azide. Also available WITHOUT BSA & azide at 1.0mg/ml.

Storage and Stability

Antibody with azide - store at 2 to 8°C. Antibody without azide - store at -20 to -80°C. Antibody is stable for 24 months. Non-hazardous. No MSDS required.

Research Areas

Signal Transduction, Transcription Factors

Limitations and Warranty

This antibody is available for research use only and is not approved for use in diagnosis. There are no warranties, expressed or implied, which extend beyond this description. Company is not liable for any personal injury or economic loss resulting from this product.
