

## Recombinant Podoplanin (PDPN) (Lymphatic Endothelial & Mesothelial Marker) Antibody

Rabbit Monoclonal Antibody [Clone PDPN/4009R]

Catalog No	Format	Size
10630-RBM2-P0	Purified Ab with BSA and Azide at 200ug/ml	20 ug
10630-RBM2-P1	Purified Ab with BSA and Azide at 200ug/ml	100 ug
10630-RBM2-P1ABX	Purified Ab WITHOUT BSA and Azide at 1.0mg/ml	100 ug

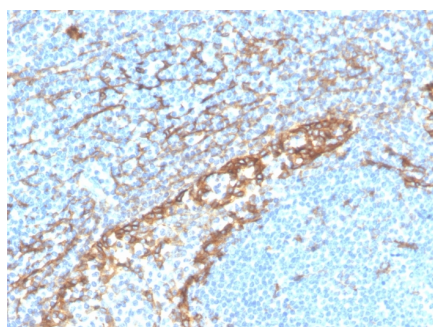
Applications	Tested Dillution	Note
Immunofluorescence (IF)	1-3ug/ml	
Western Blot (WB)	2-4ug/ml	

### Product Details

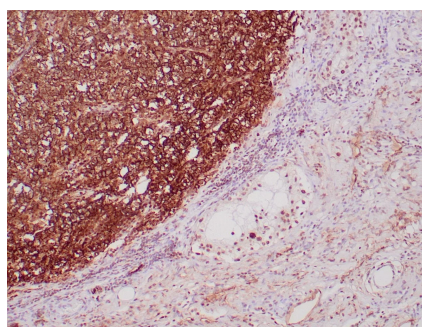
<b>Clone</b>	PDPN/4009R
<b>Gene Name</b>	PDPN
<b>Immunogen</b>	Synthetic peptide corresponding to residues within aa1-100 of Podoplanin
<b>Host</b>	Rabbit
<b>Clonality</b>	Monoclonal
<b>Isotype / Light Chain</b>	IgG / Kappa
<b>Mol. Weight of Antigen</b>	17kDa
<b>Cellular Localization</b>	Apical cell membrane, Basolateral cell membrane, Cell projection, Cytoplasm, Cytosol, Filopodium membrane, Invadopodium, Lamellipodium membrane, Membrane, Membrane raft, Microvillus membrane, Ruffle membrane
<b>Species Reactivity</b>	Human
<b>Positive Control</b>	cervical or lung carcinoma tissues., Human tonsil

*\*Optimal dilution for a specific application should be determined.*

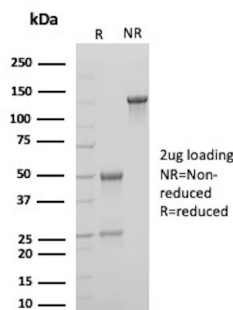
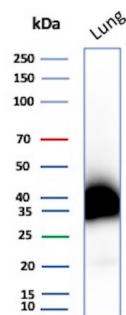
### Product Images for Recombinant Podoplanin (PDPN) (Lymphatic Endothelial & Mesothelial Marker) Antibody



Formalin-fixed, paraffin-embedded human tonsil stained with Podoplanin Recombinant Rabbit Monoclonal Antibody (PDPN/4009R).

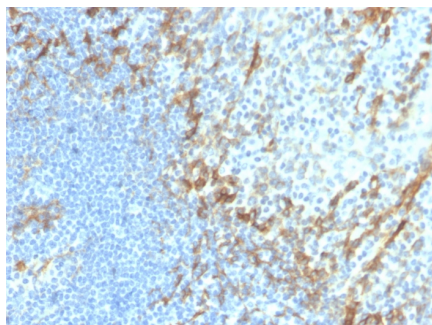


Formalin-fixed, paraffin-embedded human seminoma stained with Podoplanin Recombinant Rabbit Monoclonal Antibody (PDPN/4009R). HIER: Tris/EDTA, pH9.0, 45min. 2°: HRP-polymer, 30min. DAB, 5min.



Western blot analysis of human Lung tissue lysate using PDPN Recombinant Rabbit Monoclonal Antibody (PDPN/4009R).

SDS-PAGE Analysis of Purified Podoplanin Recombinant Rabbit Monoclonal Antibody (PDPN/4009R). Confirmation of Purity and Integrity of Antibody.



Formalin-fixed, paraffin-embedded human tonsil stained with Podoplanin Recombinant Rabbit Monoclonal Antibody (PDPN/4009R).

### Specificity & Comments

It recognizes a muco-protein of 38-43kDa, which is identified as Podoplanin (PDPN). It localizes in stromal cells of peripheral lymphoid tissue and thymic epithelial cells. As a regulator of the lymphatic endothelium, podoplanin probably plays a role in maintaining the unique shape of podocytes. It is selectively expressed in lymphatic endotheliumas well as lymphoangiomas,Kaposi sarcomas,and in a subset of angiosarcomas with probable lymphatic differentiation. Recent studies have also shown podoplanin to be a highly sensitive and relatively specific marker for epithelioid mesothelioma. Therefore, it can be used in a panel to distinguish mesotheliomas or mesothelial cells from pulmonary carcinomas.

### Limitations and Warranty

This antibody is available for research use only and is not approved for use in diagnosis. There are no warranties, expressed or implied, which extend beyond this description. Company is not liable for any personal injury or economic loss resulting from this product.

### Supplied As

200ug/ml of Ab purified from Bioreactor Concentrate by Protein A/G. Prepared in 10mM PBS with 0.05% BSA & 0.05% azide. Also available WITHOUT BSA & azide at 1.0mg/ml.

### Storage and Stability

Antibody with azide - store at 2 to 8 °C. Antibody without azide - store at -20 to -80 °C. Antibody is stable for 24 months. Non-hazardous. No MSDS required.

### Research Areas

Angiogenesis, Dendritic Cell Marker, Endothelial Cell Marker