

Peroxiredoxin 4 (Prognostic Marker for Lung SqCC) Antibody

Mouse Monoclonal Antibody [Clone CPTC-PRDX4-2]

Catalog No	Format	Size
10549-MSM2-P0	Purified Ab with BSA and Azide at 200ug/ml	20 ug
10549-MSM2-P1	Purified Ab with BSA and Azide at 200ug/ml	100 ug
10549-MSM2-P1ABX	Purified Ab WITHOUT BSA and Azide at 1.0mg/ml	100 ug

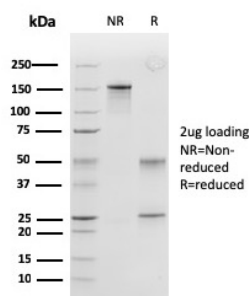
Applications	Tested Dillution	Note
--------------	------------------	------

Product Details

Clone	CPTC-PRDX4-2
Gene Name	PRDX4
Immunogen	Recombinant full-length human PRDX4 protein
Host	Mouse
Clonality	Monoclonal
Isotype / Light Chain	IgG2b / Kappa
Mol. Weight of Antigen	27kDa
Cellular Localization	Cytoplasm, Endoplasmic reticulum
Species Reactivity	Human
Positive Control	HeLa and Jurkat cell lysates. Ovarian carcinoma tissue., HePG2

*Optimal dilution for a specific application should be determined.

Product Images for Peroxiredoxin 4 (Prognostic Marker for Lung SqCC) Antibody



SDS-PAGE Analysis of Purified Peroxiredoxin 4 Monoclonal Antibody (CPTC-PRDX4-2). Confirmation of Purity and Integrity of Antibody.

Specificity & Comments

The peroxiredoxin (PRX) family comprises six antioxidant proteins, PRX I, II, III, IV, V and VI, which protect cells from reactive oxygen species (ROS) by preventing the metal-catalyzed oxidation of enzymes. The PRX proteins primarily utilize thioredoxin as the electron donor for antioxidation, although they are fairly promiscuous with regard to the hydroperoxide substrate. In addition to protection from ROS, peroxiredoxins are also involved in cell proliferation, differentiation and gene expression. PRX I, II, IV and VI show diffuse cytoplasmic localization, while PRX III and V exhibit distinct mitochondrial localization. The human PRX IV gene is expressed in many tissues. It exists as a precursor protein, which is only detected in testis, and a processed secreted form. PRX IV is highly expressed in lung cancer and is necessary for the promotion of lung cancer in vitro. Studies have demonstrated that PRX IV positive expression is significantly correlated with recurrences and shorter disease-free survival in patients with early-stage lung squamous cell carcinoma, and therefore can be used as a prognostic marker in lung squamous cell carcinoma.

Supplied As

200ug/ml of Ab Purified from Bioreactor Concentrate by Protein A/G. Prepared in 10mM PBS with 0.05% BSA & 0.05% azide. Also available WITHOUT BSA & azide at 1.0mg/ml.

Storage and Stability

Antibody with azide - store at 2 to 8°C. Antibody without azide - store at -20 to -80°C. Antibody is stable for 24 months. Non-hazardous. No MSDS required.

Research Areas

Cardiovascular, Immunology

Limitations and Warranty

This antibody is available for research use only and is not approved for use in diagnosis. There are no warranties, expressed or implied, which extend beyond this description. Company is not liable for any personal injury or economic loss resulting from this product.
