

## Carcinoembryonic Antigen (CEA) / CD66e Antibody

Catalog No	Format	Size
1048-RBP21-P0	Purified Ab with BSA and Azide at 200ug/ml	20 ug
1048-RBP21-P1	Purified Ab with BSA and Azide at 200ug/ml	100 ug
1048-RBP21-P1ABX	Purified Ab WITHOUT BSA and Azide at 1.0mg/ml	100 ug

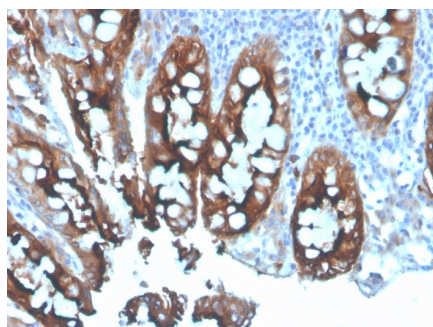
Applications	Tested Dillution	Note
Immunohistochemistry (IHC)	1-2ug/ml	30 min at RT. Staining of formalin-fixed tissues requires heating tissue sections in 10mM Tris with 1mM EDTA, pH 9.0, for 45 min at 95°C followed by cooling at RT for 20 minutes

### Product Details

Gene Name	CEACAM5
Immunogen	Purified native human CEA protein
Host	Rabbit
Clonality	Polyclonal
Isotype / Light Chain	IgG / Kappa
Mol. Weight of Antigen	80-200kDa
Cellular Localization	Apical cell membrane, Cell membrane, Cell surface
Species Reactivity	Human
Positive Control	MCF7 or 293T cells. Human colon carcinoma.

*\*Optimal dilution for a specific application should be determined.*

### Product Images for Carcinoembryonic Antigen (CEA) / CD66e Antibody



Formalin-fixed, paraffin-embedded human colon carcinoma stained with CEA Rabbit Polyclonal Antibody.

### Specificity & Comments

This antibody recognizes proteins of 80-200kDa, identified as different members of CEA family. CEA is synthesized during development in the fetal gut and is re-expressed in increased amounts in intestinal carcinomas and several other tumors. This MAb does not react with nonspecific cross-reacting antigen (NCA) and with human polymorphonuclear leucocytes. It shows no reaction with a variety of normal tissues and is suitable for staining of formalin/paraffin tissues. CEA is not found in benign glands, stroma, or malignant prostatic cells. Antibody to CEA is useful in detecting early foci of gastric carcinoma and in distinguishing pulmonary adenocarcinomas (60-70% are CEA+) from pleural mesotheliomas (rarely or weakly CEA+). Anti-CEA positivity is seen in adenocarcinomas from the lung, colon, stomach, esophagus, pancreas, gallbadder, urachus, salivary gland, ovary, and endocervix.

### Supplied As

200ug/ml of Ab purified from Rabbit Serum by Protein A. Prepared in 10mM PBS with 0.05% BSA & 0.05% azide. Also available WITHOUT BSA & azide at 1.0mg/ml.

### Storage and Stability

Antibody with azide - store at 2 to 8 °C. Antibody without azide - store at -20 to -80 °C. Antibody is stable for 24 months. Non-hazardous. No MSDS required.

### Research Areas

Hematopoietic Stem Cells

## Limitations and Warranty

This antibody is available for research use only and is not approved for use in diagnosis. There are no warranties, expressed or implied, which extend beyond this description. Company is not liable for any personal injury or economic loss resulting from this product.

---