

## Recombinant Carcinoembryonic Antigen (CEA) / CD66e Antibody

Rabbit Monoclonal Antibody [Clone C66/3707R]

Catalog No	Format	Size
1048-RBM17-P0	Purified Ab with BSA and Azide at 200ug/ml	20 ug
1048-RBM17-P1	Purified Ab with BSA and Azide at 200ug/ml	100 ug
1048-RBM17-P1ABX	Purified Ab WITHOUT BSA and Azide at 1.0mg/ml	100 ug

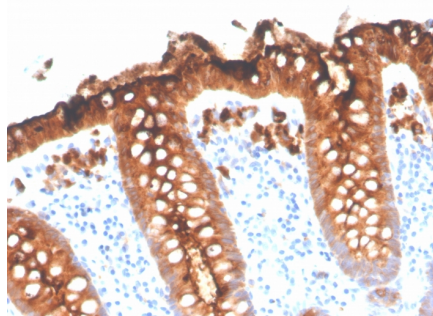
Applications	Tested Dillution	Note
Immunohistochemistry (IHC)	1-2ug/ml	30 min at RT. Staining of formalin-fixed tissues requires heating tissue sections in 10mM Tris with 1mM EDTA, pH 9.0, for 45 min at 95°C followed by cooling at RT for 20 minutes
Western Blot (WB)	2-4ug/ml	

### Product Details

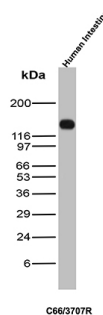
<b>Clone</b>	C66/3707R
<b>Gene Name</b>	CEACAM5
<b>Immunogen</b>	Recombinant full-length human CEA protein
<b>Host</b>	Rabbit
<b>Clonality</b>	Monoclonal
<b>Isotype / Light Chain</b>	IgG / Kappa
<b>Mol. Weight of Antigen</b>	180-200kDa
<b>Cellular Localization</b>	Apical cell membrane, Cell membrane, Cell surface
<b>Species Reactivity</b>	Human
<b>Positive Control</b>	MCF7 or 293T cells. Colon carcinoma. Human Intestine.

\*Optimal dilution for a specific application should be determined.

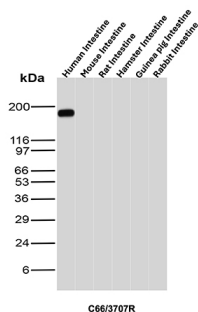
### Product Images for Recombinant Carcinoembryonic Antigen (CEA) / CD66e Antibody



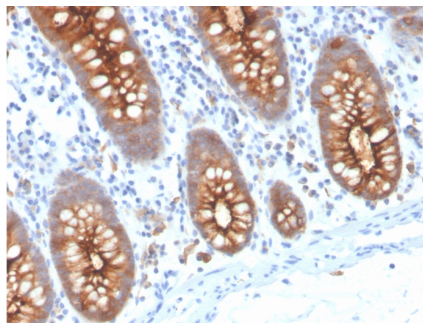
Formalin-fixed, paraffin-embedded human colon stained with CEAREcombinant Rabbit Monoclonal Antibody (C66/3707R).



Western Blot Analysis of Human Intestine tissue lysate using CEAREcombinant Rabbit Monoclonal Antibody (C66/3707R).



Western Blot Analysis of Intestine tissue lysates of different species using CEA Recombinant Rabbit Monoclonal Antibody (C66/3707R).



Formalin-fixed, paraffin-embedded human colon stained with CEA Recombinant Rabbit Monoclonal Antibody (C66/3707R).

### Specificity & Comments

Carcinoembryonic antigen (CEA) is a glycoprotein produced in colorectal cancer tissues. In normal adult tissue, CEA is expressed in the apical border and, to a lesser extent in the cytoplasm, of the columnar cells of colon, small intestine, stomach (surface epithelium, mucous neck cells and weakly in pyloric mucous cells), pancreatic ducts, secretory epithelia of sweat glands, squamous epithelial cells of the tongue, esophagus, uterine cervix, and urothelium. The CEA antibody is a useful aid for classification of adenocarcinomas, notably in the gastrointestinal tract, including colonic and pancreatic carcinomas. IHC results also aid in the classification of secretory meningiomas and medullary carcinoma of the thyroid.

### Limitations and Warranty

This antibody is available for research use only and is not approved for use in diagnosis. There are no warranties, expressed or implied, which extend beyond this description. Company is not liable for any personal injury or economic loss resulting from this product.

### Supplied As

200ug/ml of Ab purified from Bioreactor Concentrate by Protein A/G. Prepared in 10mM PBS with 0.05% BSA & 0.05% azide. Also available WITHOUT BSA & azide at 1.0mg/ml.

### Storage and Stability

Antibody with azide - store at 2 to 8 °C. Antibody without azide - store at -20 to -80 °C. Antibody is stable for 24 months. Non-hazardous. No MSDS required.

### Research Areas

Hematopoietic Stem Cells