

Recombinant Carcinoembryonic Antigen (CEA) / CD66 Antibody

Mouse Monoclonal Antibody [Clone rC66/1009]

| Catalog No | Format | Size |
|------------------|---|--------|
| 1048-MSM14-P0 | Purified Ab with BSA and Azide at 200ug/ml | 20 ug |
| 1048-MSM14-P1 | Purified Ab with BSA and Azide at 200ug/ml | 100 ug |
| 1048-MSM14-P1ABX | Purified Ab WITHOUT BSA and Azide at 1.0mg/ml | 100 ug |

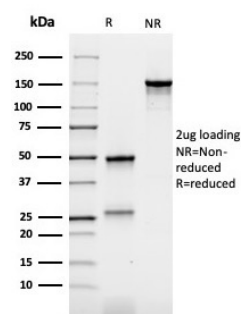
| Applications | Tested Dillution | Note |
|----------------------------|------------------|---|
| Immunohistochemistry (IHC) | 1-2ug/ml | 30 min at RT. Staining of formalin-fixed tissues requires heating tissue sections in 10mM Tris with 1mM EDTA, pH 9.0, for 45 min at 95°C followed by cooling at RT for 20 minutes |
| Western Blot (WB) | 2-4ug/ml | |

Product Details

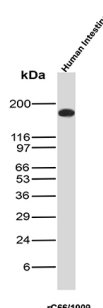
| | |
|------------------------|--|
| Clone | rC66/1009 |
| Gene Name | CEACAM5 |
| Immunogen | Recombinant full-length human CEA protein |
| Host | Mouse |
| Clonality | Monoclonal |
| Isotype / Light Chain | IgG1 / Kappa |
| Mol. Weight of Antigen | 80-200kDa |
| Cellular Localization | Apical cell membrane, Cell membrane, Cell surface |
| Species Reactivity | Human |
| Positive Control | MCF7 or 293T cells. Human colon carcinoma. Intestine |

*Optimal dilution for a specific application should be determined.

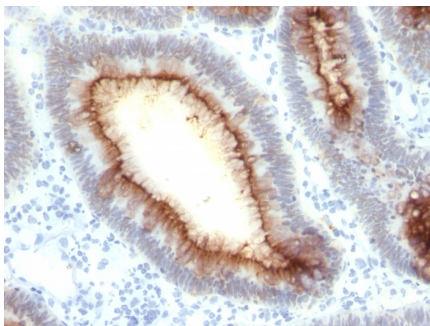
Product Images for Recombinant Carcinoembryonic Antigen (CEA) / CD66 Antibody



SDS-PAGE Analysis of Purified CEA Mouse Recombinant Monoclonal Antibody (rC66/1009). Confirmation of Purity and Integrity of Antibody.



Western Blot analysis of Human Intestine lysate using CEA Recombinant Mouse Monoclonal Antibody (rC66/1009).



Formalin-fixed, paraffin-embedded human colon carcinoma stained with CEA Mouse Recombinant Monoclonal Antibody (rC66/1009).

Specificity & Comments

This antibody recognizes proteins of 80-200kDa, identified as different members of CEA family. CEA is synthesized during development in the fetal gut and is re-expressed in increased amounts in intestinal carcinomas and several other tumors. This MAb does not react with nonspecific cross-reacting antigen (NCA) and with human polymorphonuclear leucocytes. It shows no reaction with a variety of normal tissues and is suitable for staining of formalin/paraffin tissues. CEA is not found in benign glands, stroma, or malignant prostatic cells. Antibody to CEA is useful in detecting early foci of gastric carcinoma and in distinguishing pulmonary adenocarcinomas (60-70% are CEA+) from pleural mesotheliomas (rarely or weakly CEA+). Anti-CEA positivity is seen in adenocarcinomas from the lung, colon, stomach, esophagus, pancreas, gallbladder, urachus, salivary gland, ovary, and endocervix.

Limitations and Warranty

This antibody is available for research use only and is not approved for use in diagnosis. There are no warranties, expressed or implied, which extend beyond this description. Company is not liable for any personal injury or economic loss resulting from this product.

Supplied As

200ug/ml of Ab produced in HEK293 cell mammalian-based expression system. Prepared in 10mM PBS with 0.05% BSA & 0.05% azide. Also available WITHOUT BSA & azide at 1.0mg/ml.

Storage and Stability

Antibody with azide - store at 2 to 8 °C. Antibody without azide - store at -20 to -80 °C. Antibody is stable for 24 months. Non-hazardous. No MSDS required.

Research Areas

Hematopoietic Stem Cells