

Recombinant Tubulin beta 3 / TUBB3 (Neuronal & Stem Cell Marker) Antibody

Rabbit Monoclonal Antibody [Clone TUBB3/7089R]

Catalog No	Format	Size
10381-RBM3-P0	Purified Ab with BSA and Azide at 200ug/ml	20 ug
10381-RBM3-P1	Purified Ab with BSA and Azide at 200ug/ml	100 ug
10381-RBM3-P1ABX	Purified Ab WITHOUT BSA and Azide at 1.0mg/ml	100 ug

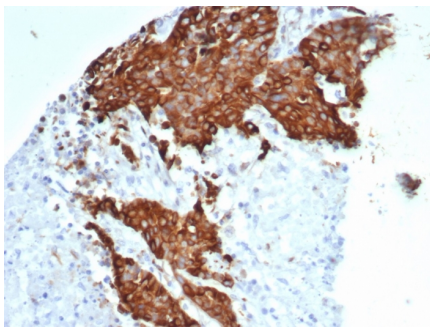
Applications	Tested Dillution	Note
Immunohistochemistry (IHC)	1-2ug/ml	30 min at RT. Staining of formalin-fixed tissues requires heating tissue sections in 10mM Tris with 1mM EDTA, pH 9.0, for 45 min at 95°C followed by cooling at RT for 20 minutes
Western Blot (WB)	2-4ug/ml	

Product Details

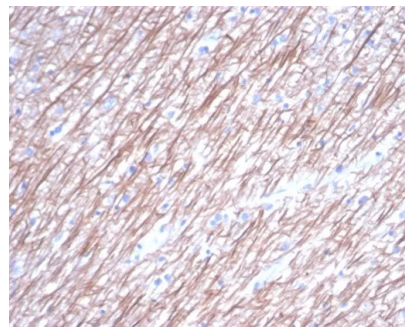
Clone	TUBB3/7089R
Gene Name	TUBB3
Immunogen	A synthetic peptide (aa 437-450) of human Tubulin beta 3 protein (TUBB3); coupled to KLH
Host	Rabbit
Clonality	Monoclonal
Isotype / Light Chain	IgG / Kappa
Mol. Weight of Antigen	55kDa
Cellular Localization	Cell projection, Cytoplasm, Cytoskeleton, Filopodium, Growth cone, Lamellipodium
Species Reactivity	Human
Positive Control	Human brain or testis.

*Optimal dilution for a specific application should be determined.

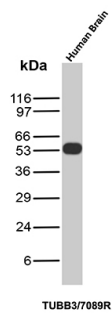
Product Images for Recombinant Tubulin beta 3 / TUBB3 (Neuronal & Stem Cell Marker) Antibody



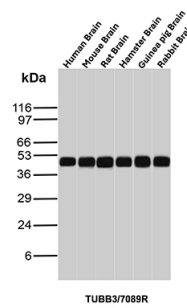
Formalin-fixed, paraffin-embedded human ovarian carcinoma stained with Tubulin beta 3 Recombinant Rabbit Monoclonal Antibody (TUBB3/7089R).



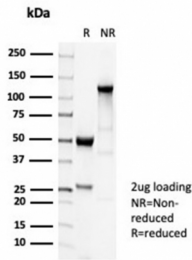
Formalin-fixed, paraffin-embedded human brain stained with Tubulin beta 3 Recombinant Rabbit Monoclonal Antibody (TUBB3/7089R). HIER: Tris/EDTA, pH9.0, 45min. 2°: HRP-polymer, 30min. DAB, 5min.



Western Blot Analysis of Human Brain tissue lysate using Tubulin beta 3 Recombinant Rabbit Monoclonal Antibody (TUBB3/7089R).



Western Blot Analysis of Brain tissue lysates of different species using Tubulin beta 3 Recombinant Rabbit Monoclonal Antibody (TUBB3/7089R).



SDS-PAGE Analysis Purified TUBB3 Recombinant Rabbit Monoclonal Antibody (TUBB3/7089R). Confirmation of Purity and Integrity of Antibody.

Specificity & Comments

This gene encodes a class III member of the beta tubulin protein family. Beta tubulins are one of two core protein families (alpha and beta tubulins) that heterodimerize and assemble to form microtubules. This protein is primarily expressed in neurons and may be involved in neurogenesis and axon guidance and maintenance. Mutations in this gene are the cause of congenital fibrosis of the extraocular muscles type 3. In adults, tubulin beta 3 (TUBB3) is primarily expressed in neurons and is commonly used as a neuronal marker. It plays an important role in neuronal cell proliferation and differentiation.

Supplied As

200ug/ml of Ab purified from Bioreactor Concentrate by Protein A/G. Prepared in 10mM PBS with 0.05% BSA & 0.05% azide. Also available WITHOUT BSA & azide at 1.0mg/ml.

Storage and Stability

Antibody with azide - store at 2 to 8 °C. Antibody without azide - store at -20 to -80 °C. Antibody is stable for 24 months. Non-hazardous. No MSDS required.

Research Areas

Cardiovascular, Developmental Biology, Immunology, Infectious Disease, Neuroscience, Signal Transduction

Limitations and Warranty

This antibody is available for research use only and is not approved for diagnosis. There are no warranties, expressed or implied, which extend beyond this description. Company is not liable for any personal injury or economic loss resulting from this product.