

Tubulin beta 3 / TUBB3 (Neuronal& Stem Cell Marker) Antibody

Mouse Monoclonal Antibody [Clone TUBB3/3732]

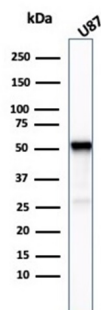
Catalog No	Format	Size
10381-MSM2-P0	Purified Ab with BSA and Azide	200ug/ml
10381-MSM2-P1	Purified Ab with BSA and Azide	200ug/ml
10381-MSM2-P1ABX	Purified Ab WITHOUT BSA and Azide	1.0mg/ml

Applications	Tested Dillution
Immunohistochemistry (IHC)	1-2ug/ml
Western Blot (WB)	2-4ug/ml

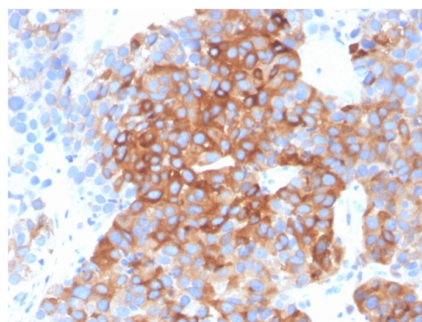
Product Details	
Clone	TUBB3/3732
Gene Name	TUBB3
Immunogen	A synthetic peptide (aa 437-450) of human Tubulin beta 3 protein (TUBB3); coupled to KLH.
Host	Mouse
Clonality	Monoclonal
Isotype / Light Chain	IgG2a / Kappa
Mol. Weight of Antigen	55kDa
Cellular Localization	Cell projection, Cytoplasm, Cytoskeleton, Filopodium, Growth cone, Lamellipodium
Species Reactivity	Dog, Human
Positive Control	A375, Raji or HEP2 cells. Human brain and testis., U87

**Optimal dilution for a specific application should be determined.*

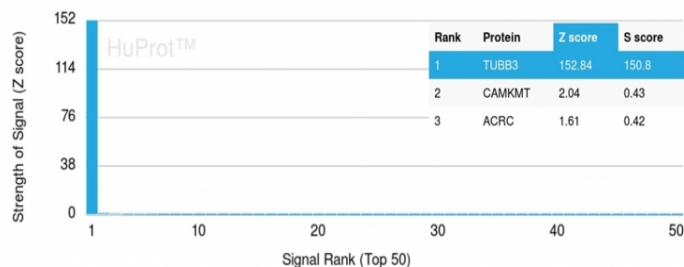
Product Images for Tubulin beta 3 / TUBB3 (Neuronal& Stem Cell Marker) Antibody



Western Blot Analysis of U87 cell lysate using Tubulin beta 3 Mouse Monoclonal Antibody (TUBB3/3732).



Formalin-fixed, paraffin-embedded human brain stained with Tubulin beta 3 Mouse Monoclonal Antibody (TUBB3/3732).



Analysis of Protein Array containing more than 21,000 full-length human proteins using Tubulin beta 3 Mouse Monoclonal Antibody (TUBB3/3732) Z- and S- Score: The Z-score represents the strength of a signal that a monoclonal antibody (MAb) (in combination with a fluorescently-tagged anti-IgG secondary antibody) produces when binding to a particular protein on the HuProt™ array. Z-scores are described in units of standard deviations (SD's) above the mean value of all signals generated on that array. If targets on HuProt™ are arranged in descending order of the Z-score, the S-score is the difference (also in units of SD's) between the Z-score. S-score therefore represents the relative target specificity of a MAb to its intended target. A MAb is considered to be specific to its intended target, if the MAb has an S-score of at least 2.5. For example, if a MAb binds to protein X with a Z-score of 43 and to protein Y with a Z-score of 14, then the S-score for the binding of that MAb to protein X is equal to 29.

Specificity & Comments

This gene encodes a class III member of the beta tubulin protein family. Beta tubulins are one of two core protein families (alpha and beta tubulins) that heterodimerize and assemble to form microtubules. This protein is primarily expressed in neurons and may be involved in neurogenesis and axon guidance and maintenance. Mutations in this gene are the cause of congenital fibrosis of the extraocular muscles type 3. In adults, tubulin beta 3 (TUBB3) is primarily expressed in neurons and is commonly used as a neuronal marker. It plays an important role in neuronal cell proliferation and differentiation.

Research Areas

Cardiovascular, Developmental Biology, Immunology, Neuroscience, Infectious Disease, Signal Transduction

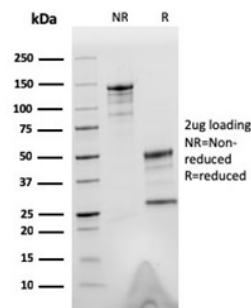
Known Applications & Suggested Dilutions

Western Blot (1-2ug/ml) | Immunohistochemistry (Formalin-fixed) (1-2ug/ml for 30 minutes at RT), (Staining of formalin-fixed tissues requires heating tissue sections in 10mM Tris with 1mM EDTA, pH 9.0, for 45 min at 95 °C followed by cooling at RT for 20 minutes), Optimal dilution for a specific application should be determined.

Limitations and Warranty

This antibody is available for research use only and is not approved for diagnosis.

There are no warranties, expressed or implied, which extend beyond this description. Company is not liable for any personal injury or economic loss resulting from this product.



SDS-PAGE Analysis. Purified Tubulin beta 3 Mouse Monoclonal Antibody (TUBB3/3732). Confirmation of Purity and Integrity of Antibody.

Supplied As

200ug/ml of Ab purified from Bioreactor Concentrate by Protein A/G. Prepared in 10mM PBS with 0.05% BSA & 0.05% azide. Also available WITHOUT BSA & azide at 1.0mg/ml.

Storage and Stability

Antibody with azide - store at 2 to 8 °C. Antibody without azide - store at -20 to -80 °C. Antibody is stable for 24 months. Non-hazardous. No MSDS required.