

## p21WAF1 (Tumor Suppressor Protein) Antibody

Mouse Monoclonal Antibody [Clone AC8]

Catalog No	Format	Size
1026-MSM8-P0	Purified Ab with BSA and Azide at 200ug/ml	20 ug
1026-MSM8-P1	Purified Ab with BSA and Azide at 200ug/ml	100 ug
1026-MSM8-P1ABX	Purified Ab WITHOUT BSA and Azide at 1.0mg/ml	100 ug

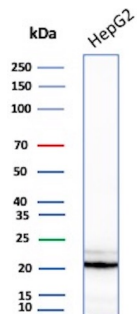
Applications	Tested Dillution	Note
Immunofluorescence (IF)	1-3ug/ml	
Western Blot (WB)	2-4ug/ml	

### Product Details

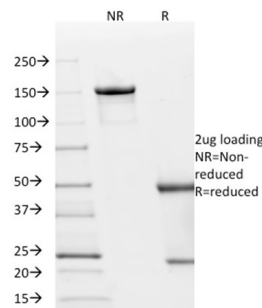
<b>Clone</b>	AC8
<b>Gene Name</b>	CDKN1A
<b>Immunogen</b>	Recombinant full-length human CDKN1A protein
<b>Host</b>	Mouse
<b>Clonality</b>	Monoclonal
<b>Isotype / Light Chain</b>	IgG1 / Kappa
<b>Mol. Weight of Antigen</b>	21kDa
<b>Cellular Localization</b>	Cytoplasm, Nucleus
<b>Species Reactivity</b>	Human
<b>Positive Control</b>	HepG-2, HeLa or MCF7 cells.

\*Optimal dilution for a specific application should be determined.

### Product Images for p21WAF1 (Tumor Suppressor Protein) Antibody



Western blot analysis of human HepG2 tissue lysate using WAF1 Mouse Monoclonal Antibody (AC8).



SDS-PAGE Analysis of Purified p21 Mouse Monoclonal Antibody (AC8). Confirmation of Integrity and Purity of Antibody.

### **Specificity & Comments**

This MAb recognizes a 21kDa protein, identified as the p21WAF1 tumor suppressor protein. This MAb is highly specific to p21 and shows no cross-reaction with other closely related mitotic inhibitors. p21WAF1 is a specific inhibitor of cdk's and a tumor suppressor involved in the pathogenesis of a variety of malignancies. The expression of this gene acts as an inhibitor of the cell cycle during G1 phase and is tightly controlled by the tumor suppressor protein p53. Its expression is induced by the wild type, but not mutant, p53 suppressor protein. Normal cells generally display a rather intense nuclear p21 expression. Loss of p21 expression has been reported in many carcinomas (gastric carcinoma, non-small cell lung carcinoma, thyroid carcinoma).

---

### **Limitations and Warranty**

This antibody is available for research use only and is not approved for use in diagnosis. There are no warranties, expressed or implied, which extend beyond this description. Company is not liable for any personal injury or economic loss resulting from this product.

---

### **Supplied As**

200ug/ml of Ab Purified from Bioreactor Concentrate by Protein A/G. Prepared in 10mM PBS with 0.05% BSA & 0.05% azide. Also available WITHOUT BSA & azide at 1.0mg/ml.

---

### **Storage and Stability**

Antibody with azide - store at 2 to 8°C. Antibody without azide - store at -20 to -80°C. Antibody is stable for 24 months. Non-hazardous. No MSDS required.

---

### **Research Areas**

AKT Signaling, Bladder Cancer, Breast Cancer, Cancer, Cardiovascular, Colon Cancer, Cytokine Signaling, Developmental Biology, Immunology, Infectious Disease, Lung Cancer, Nuclear Marker, Ovarian Cancer, Signal Transduction, Transcription Factors

---