

P-Cadherin (CDH3) Antibody

Mouse Monoclonal Antibody [Clone 12H6]

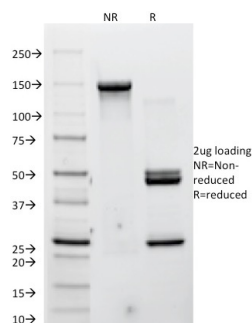
Catalog No	Format	Size
1001-MSM1-P0	Purified Ab with BSA and Azide	200ug/ml
1001-MSM1-P1	Purified Ab with BSA and Azide	200ug/ml
1001-MSM1-P1ABX	Purified Ab WITHOUT BSA and Azide	1.0mg/ml

Applications	Tested Dillution
Flow Cytometry (Flow)	1-2ug/million cells
Immunofluorescence (IF)	1-3ug/ml
Western Blot (WB)	2-4ug/ml

Product Details	
Clone	12H6
Gene Name	CDH3
Immunogen	Recombinant human P-cadherin fusion protein
Host	Mouse
Clonality	Monoclonal
Isotype / Light Chain	IgG1 / Kappa
Mol. Weight of Antigen	116kDa
Cellular Localization	Cell membrane
Species Reactivity	Human
Positive Control	A431 or PC-3 cells. Pancreas, Placenta or Prostate.

**Optimal dilution for a specific application should be determined.*

Product Images for P-Cadherin (CDH3) Antibody



SDS-PAGE Analysis of Purified P-Cadherin Mouse Monoclonal Antibody (12H6).
Confirmation of Integrity and Purity of Antibody.

Specificity & Comments

Recognizes a protein of 116kDa, identified as P-Cadherin-1 (CDH3). It is a calcium-dependent cell-cell adhesion glycoprotein comprised of five extracellular cadherin repeats, a transmembrane region and a highly conserved cytoplasmic tail. This gene is located in a six-cadherin cluster in a region on the long arm of chromosome 16 that is involved in loss of heterozygosity events in breast and prostate cancer. In addition, aberrant expression of this protein is observed in cervical adenocarcinomas. Mutations in this gene have been associated with congenital hypotrichosis with juvenile macular dystrophy.

Research Areas

Basal Cell Marker

Known Applications & Suggested Dilutions

Flow Cytometry (1-2ug/million cells) | Immunofluorescence (1-2ug/ml) | Western Blot (1-2ug/ml) Optimal dilution for a specific application should be determined.

Limitations and Warranty

This antibody is available for research use only and is not approved for use in diagnosis.

There are no warranties, expressed or implied, which extend beyond this description. Company is not liable for any personal injury or economic loss resulting from this product.

Supplied As

200ug/ml of Ab Purified from Bioreactor Concentrate by Protein A/G. Prepared in 10mM PBS with 0.05% BSA & 0.05% azide. Also available WITHOUT BSA & azide at 1.0mg/ml.

Storage and Stability

Antibody with azide - store at 2 to 8°C. Antibody without azide - store at -20 to -80°C. Antibody is stable for 24 months. Non-hazardous. No MSDS required.
